

TERRO

Final File Date: 5/21

Woodstream Corporation

Artwork By: Sarah Hartung

Approved By:

Date:

Color Specifications:



Process Cyan Process Magenta Process Yellow Process Black



PMS 165 PMS 109 PMS 286

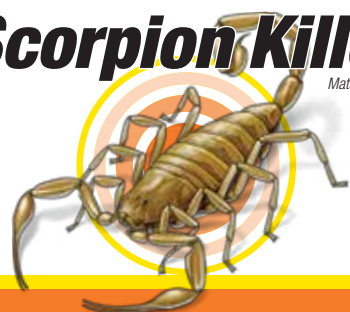
Details:



Deline (do not print) Annotations (do not print)

TERRO[®]**Scorpion Killer₂**

Mata escorpión.



Kills on contact
Keeps killing
up to 6 weeks

Effective against:
Scorpions, Spiders, Ants,
Cockroaches, Crickets
and other listed insects.

KEEP OUT OF REACH
OF CHILDREN**CAUTION**See Rear Panel for Additional
Precautionary Statements.MANTÉNGASE FUERA DEL
ALCANCE DE LOS NIÑOS**PRECAUCIÓN**Vea el Panel Posterior para
Precauciones Adicionales.

ACTIVE INGREDIENTS/INGREDIENTES ACTIVOS:
Prallethrin [(RS)-2-Methyl-4-oxo-3-(2-propynyl)
cyclopent-2-enyl [(RS)-cis, trans-chrysanthemate] 0.03%
Esfenvalerate [(S)-Ciano (3-phenoxphenyl) methyl
4-chloro-alpha-(1-methylethyl) benzeneacetate] 0.05%
N-Octyl bicycloheptene dicarboximide 0.29%
OTHER INGREDIENTS/OTROS INGREDIENTES 99.63%
TOTAL 100.00%

*MGK[®] 264, Insecticide Synergist

NET WT/PESO NETO 1 lb. (453g)

Shake well before using**DIRECTIONS FOR USE**

It is a violation of Federal Law to use this product in a manner inconsistent with its labeling.

USE RESTRICTIONS: Apply this product only as specified on this label. Do not contaminate food or feedstuffs. **This product is intended for indoor/limited outdoor residential use only.** All residential outdoor applications must be limited to building surfaces and spot treatments on structures only. Broadcast surface applications are prohibited. Do not allow adults, children, or pets to enter the treated area until sprays have dried. Do not allow children or pets to contact treated surfaces until spray has dried. Do not apply this product in a way that will contact adults, children, or pets, either directly or through drift. Do not wet articles to the point of run-off or drip. Do not use treated article until spray has dried. Remove or cover exposed food and drinking water before application. Remove or cover dishes, utensils, food processing equipment, and food processing surfaces, or wash them before use. Do not water the treated area to the point of run-off. Do not make applications during rain. Application is prohibited directly into sewers or drains, or to any area like a gutter where drainage to sewers, storm drains, water bodies, or aquatic habitat can occur. Do not allow this product to enter any drain during or after application. Remove pets, birds, and cover fish aquariums before spraying. Only for use in and around residential areas such as Rooms, Apartments, Homes, Attics, Basements, Campers, Boats, Household Storage Areas, Garages, Pet Sleeping Areas, and Cabins.

SHAKE WELL BEFORE USE.

USE INFORMATION: Use this spray as a spot or crack and crevice treatment to control cockroaches, fleas, silverfish, waterbugs, and other insects listed below. Apply this product only as a coarse spray or crack and crevice treatment to localized areas where pests are found or may occur. Spray surfaces until wet.

FOR SPOT TREATMENT: To Kill Ants, Asian Lady Bird Beetles, Black Widow Spiders, Centipedes, Cockroaches, Crickets, Indian Meal Moths, Scorpions, Silverfish, Sowbugs, and Spiders: Spray areas where these insects are found or may hide, including dark corners of rooms and closets, cracks and crevices in walls, along baseboards and floor and window frames, behind and beneath sinks, stoves, refrigerators, and cabinets; and around garbage cans, plumbing, and other utility installations. Pests driven out of hiding places should be sprayed directly. **For Ants,** spray ant trails and around doors and windows, and wherever else these pests may find entrance.

FOR CRACK AND CREVICE TREATMENT: To Kill Ants, Black Widow Spiders, Brown Dog Ticks, Cockroaches, Crickets, Fleas, Scorpions, Silverfish, Sowbugs, and Spiders: Apply spray in small amounts directly into cracks and crevices. Equipment capable of delivering a pin stream should be used in points between different interior elements of construction, between equipment and floors, openings leading to voids and hollow spaces in interior walls, equipment legs and bases where these insects hide.

Care should be taken to avoid depositing the product onto exposed surfaces or introducing the material into the air.

Avoid contamination of food or food handling surfaces.

STORAGE AND DISPOSAL

Do not contaminate water, food, or feed by storage and disposal. **PESTICIDE STORAGE:** Store in a cool, dry area. Always store pesticides in the original container. Store away from food and pet food. **PESTICIDE DISPOSAL AND CONTAINER HANDLING:** Do not puncture or incinerate! Nonrefillable Container. Do not reuse or refill this container. **If empty:** Place in trash or offer for recycling if available. **If partly filled:** Call your local solid waste agency for disposal instructions.

PRECAUTIONARY STATEMENTS**HAZARDS TO HUMANS AND DOMESTIC ANIMALS**

CAUTION: Causes moderate eye irritation. Harmful if swallowed or absorbed through skin. Avoid contact with skin, eyes, or clothing. Wash thoroughly with soap and water after handling and before eating, drinking, chewing gum, or using tobacco. Remove and wash contaminated clothing before reuse. Prolonged or frequently repeated skin contact may cause allergic reaction in some individuals.

Manufactured for:
Senoret Chemical Co., Inc.
69 North Locust Street, Litz, PA 17543 USA
1-844-837-7644
BOT-P2102 REV-0821

EPA Reg. No. 1021-1691-149
EPA Est. No. 33595-MO-2, 33595-MO-3,
33595-MO-4, 11623-GA-2
Est. No. subscript is first letter of batch
code on bottom of container.
Model No.: T2102-6

FIRST AID: IF ON SKIN OR CLOTHING: Take off contaminated clothing. Rinse skin immediately with plenty of water for 15 – 20 minutes. Call a poison control center or doctor for treatment advice. **IF IN EYES:** Hold eye open and rinse slowly and gently with water for 15 – 20 minutes. Remove contact lenses, if present, after the first 5 minutes. Then continue rinsing eye. Call a poison control center or doctor for treatment advice. **IF SWALLOWED:** Immediately call a poison control center or doctor. Do not induce vomiting unless told to do so by a poison control center or doctor. Do not give any liquid to the person. Do not give anything by mouth to an unconscious person. Have the product container or label with you when calling a poison control center or doctor, or going for treatment. For information regarding medical emergencies or pesticide incidents, call 1-888-740-8712.

ENVIRONMENTAL HAZARDS: This pesticide is toxic to fish and aquatic invertebrates. Do not apply directly to or near water, or to areas where surface water is present, or to intertidal areas below the mean water mark. Do not apply when weather conditions favor drift from treated areas. Drift and run-off may be hazardous to fish in water adjacent to treated areas. Do not contaminate water when disposing of equipment wash waters. See Directions for Use for additional precautions and requirements.

PHYSICAL OR CHEMICAL HAZARDS: Contents under pressure. Do not use or store near heat or open flame. Do not puncture or incinerate container. Exposure to temperatures above 130° F may cause bursting. Do not apply this product in or on electrical equipment due to possibility of shock hazard.

Agítelo bien antes de usarlo**ALMACENAMIENTO Y ELIMINACIÓN**

No contamine el agua, los alimentos o alimentos para animales al almacenarlo o eliminarlo. **ALMACENAMIENTO DEL PESTICIDA:** Almacene en un lugar fresco y seco. Siempre almacene en el envase original. Almacene aparte de los alimentos o alimentos para animales. **ELIMINACIÓN DEL PESTICIDA Y MANEJANDO EL RECIPIENTE:** No perforo ni incinerar! Recipiente no se puede rellenar. No vuelva a usar o volver a llenar este recipiente. **Si está vacío:** Colóquelo en la basura u ofrézcalo para reciclaje si ese servicio está disponible. **Si está parcialmente lleno:** Llame a su agencia local para conocer sobre su disposición.

DECLARACIONES DE PRECAUCIÓN**RIESGOS PARA LOS HUMANOS Y LOS ANIMALES DOMÉSTICOS**

PRECAUCIÓN: Causa irritación moderada en los ojos. Dañino si se traga o se absorbe a través de la piel. Evite el contacto con los ojos, piel o ropa. Lávese cuidadosamente con agua y jabón después de manipular el producto y antes de comer, beber, utilizar goma de masticar o productos de tabaco. Retire la ropa contaminada y lávela antes de volverla a usar. El contacto prolongado o frecuentemente repetido con la piel puede causar reacciones alérgicas en algunas personas.

PRIMEROS AUXILIOS: SI ESTUVO EN CONTACTO CON LA PIEL O LA ROPA:

Quítese la ropa contaminada. Enjuague la piel inmediatamente con abundante agua durante 15 – 20 minutos. Llame a un centro de control de envenenamiento o a un médico para solicitar tratamiento. **PARA LOS OJOS:** Mantenga el ojo abierto y enjuague lenta y suavemente con agua durante 15 – 20 minutos. Retire los lentes de contacto si los usa, después de los primeros 5 minutos. Luego continúe enjuagándose los ojos. Llame a un centro de control de envenenamiento o a un médico para solicitar tratamiento. **SI SE INGIERE:** Llame inmediatamente a un centro de control de envenenamiento o a un médico. No induzca el vómito a menos que así se lo haya ordenado un centro de control de envenenamiento o un médico. No administre ningún líquido a la persona. No administre nada por vía oral (por la boca) a una persona inconsciente. Lleve consigo el envase del producto o la etiqueta cuando llame o vaya a un centro de control de envenenamiento o al médico. Para información relativa a emergencias médicas o incidentes con pesticidas, llame al 1-888-740-8712.

RIESGOS AMBIENTALES: Este pesticida es tóxico para los peces y otros invertebrados acuáticos. No aplique directamente al agua, o en áreas donde haya agua en la superficie o en áreas entre mareas por debajo de la pleamar media. No aplique cuando las condiciones climáticas favorecen la deriva desde las áreas tratadas. El escurrimiento y la propagación pueden ser peligrosos para peces en aguas adyacentes a las áreas vecinas. No contamine el agua al limpiar el equipo o al eliminar los desechos. Vea las Instrucciones de Uso para precauciones adicionales y requisitos.

RIESGOS FÍSICOS O QUÍMICOS: Contenido bajo presión. No utilice o almacene cerca del calor o llamas. No perforo ni incinerar el envase. La exposición a temperaturas superiores a 130° F (54,4°C) puede ocasionar que estalle. No aplique este producto en equipos eléctricos ni dentro de ellos debido a la posibilidad de descarga eléctrica.



DOT 2P M5749 DSC

DOT 2Q M5749 DSC